

---

# PUPILLAGE

## AT 2TG



To attract, nurture and inspire tomorrow's  
leaders of the Bar



## ABOUT 2TG:

We are a leading civil and commercial set of chambers consisting of some 60 barristers, including 12 silks.

## MORE THAN JUST A PLACE TO WORK

We are a very friendly and cohesive set, and believe that chambers should be more than a place to work. We pride ourselves on the strong relationships that exist between members of chambers practising in a wide variety of areas.

Across the range of work that Chambers covers, one feature of our culture stands out above all others: we are all committed to excellence.

In a nutshell, we are passionate about being the most sought-after advocates in our individual fields. It is this passion for excellence that unites us and makes 2TG one of the most exciting, vibrant, and ambitious chambers at the modern Bar.

## 2TG PRACTICE AREAS

Members of Chambers practise in a range of different commercial and common law areas including:

Commercial Dispute Resolution	Clinical Negligence
Commercial Fraud	Employment
Construction	Life & Health Insurance
Insurance & Reinsurance	Personal Injury
Private International Law	Professional Negligence
Product Liability	Sport
Property Damage	Travel

As with most chambers, these headings do not comprehensively describe all practice areas that we cover. However if you come here you will almost certainly decide to develop your practice in one or more of these areas. Further information on Chambers' practice areas can be found at [www.2tg.co.uk](http://www.2tg.co.uk) under 'Expertise'.

## PUPILLAGE AT 2TG:

2TG is a leading set of chambers, recognised by Chambers & Partners and the Legal 500 for its expertise in numerous fields of civil and commercial practice. Our barristers regularly appear in landmark cases in the High Court, Court of Appeal, Privy Council and Supreme Court.

## OVERVIEW

We offer some of the best funded, best structured and most enjoyable pupillages at the Bar for two or three candidates each year. We offer pupillage only to those we think have real potential to become 2TG tenants. There is no quota, so you are not in competition with your fellow pupils for tenancy.

## PUPILLAGE AWARD

Our Pupillage Award is currently £82,500 comprising:

- £20,000 paid as a grant after acceptance of the offer. This is intended to help you for your BPTC year.
- £47,500 paid in the first 6 months of pupillage.
- £15,000 guaranteed earnings in your second six months.\*

*\*our experience is that second six pupils earn significantly more*

## THE STRUCTURE OF OUR PUPILLAGE

At 2TG, you will sit with three different pupil supervisors over the course of the pupillage year. This will give you an opportunity to experience a range of different work. You will also have the chance to work for other members of chambers, including some of our leading Silks.

You are also given the opportunity to build your own practice from a very early stage. Our pupils are given cases of their own at the start of the Second Six of the pupillage year.

2TG prides itself on its friendly and supportive environment, and so we provide advocacy training for all our pupils, led by qualified Inns of Court advocacy trainers. We also provide a range of other training for pupils, including a full induction. Additionally, when you start taking on your own cases you can count on your pupil supervisors and Chambers' junior tenants to help you prepare for your very first cases in Court.

Our record for taking pupils on as tenants is excellent. This is because we will only make you an offer of pupillage if we believe that you will make a great addition to 2TG.

## MENTORING SCHEME

2TG also operates a mentoring scheme during pupillage. You will be assigned a mentor at the start of your pupillage, who will be able to answer any queries you may wish to raise confidentially, as well as providing pastoral support.

## LIFE AT 2TG: PUPILLAGE



### EMILY ALBOU

The best part about being a pupil at 2TG is the quality of work and the variety of areas in which you build experience, as well as the unparalleled advocacy experience which you get very early on. The second six months of pupillage is when the real fun begins, with your own cases. Nothing beats cross-examining a witness on your first day in court!

## LIFE AT 2TG: JUNIOR TENANTS



### ALISTAIR MACKENZIE

As a junior tenant at 2TG you will find yourself working on a huge variety of cases. From the very start, my practice has been a balance between taking charge of my own cases, in and out of court, and being led in bigger cases including going to the Supreme Court on more than one occasion.



### JESSICA VAN DER MEER

What attracted me to 2TG when I was applying for pupillage was: (i) the range of practice areas and (ii) the friendly, down-to-earth nature of Chambers. Having now been a tenant for five years, I can say that I am incredibly happy with my choice. My colleagues are fantastic: we have an open door policy and are a very social set; we organise tea every week as well as drinks on Fridays and regularly socialise together outside of work.

## PUPILLAGE SELECTION CRITERIA

### HIGH INTELLECTUAL ABILITY

The selection panel will look for an ability to absorb complex information rapidly, to identify essentials and to construct an argument. This may be demonstrated by performance at interview. The panel will take account of A Level and GCSE results (or equivalent) and, where available, degree marks, GDL and BPTC scores and grades, as well as references. The panel will look beyond academic results in seeking to identify candidates with potential or flair. The panel will give appropriate weight to any other matters appearing on the Pupillage Gateway form or arising from interview which demonstrate high intellectual ability.

### ABILITY TO THINK ON YOUR FEET

This may be demonstrated by performance at interview or (for example) by proven achievement in mooting or debating.

### MOTIVATION

The panel will look for commitment to a practice at the Bar. In addition the candidate will be required to demonstrate drive, determination, leadership skills and an ability to see things through to a successful conclusion. This may be demonstrated by (for example) achievement in non-academic fields or by overcoming adversity.

### IMPACT

The panel will look for an articulate and confident response to questions and a reassuring manner.

### TEMPERAMENT

The panel will seek to identify an ability to work under pressure, to cope with stress, and to remain calm but confident. This may be demonstrated by evidence of (for example) undertaking a wide range of extra-curricular activities but at the same time achieving academic success, or by studying for a degree at the same time as working or bringing up a family.

### COMMITMENT TO 2TG

The panel will seek to identify a commitment to these Chambers and the work it carries out.

## HOW TO APPLY

Please apply via the Pupillage Gateway. Selection of pupils is on merit and in accordance with the Pupillage Gateway Rules and 2TG's Pupillage Selection Policy.

We look for a strong academic background – successful applicants will have a *minimum* 2.1 in their undergraduate subject, and strong A Level results (or equivalent).

Above all, we look for pupils who will maintain and continue our tradition of excellence.

## OUR SELECTION PROCESS

**All the applications are scored by reference to set criteria.** These reflect our pupillage selection criteria.

We invite the 50 best applicants to a first round interview, held in chambers. The interview will include an advocacy exercise.

We invite the 12 best performers from the first round interview to do a written exercise and then to attend a final round interview. The interview will include structured questions and an advocacy exercise. The written exercise and advocacy exercise are designed to test legal aptitude rather than any specific legal knowledge.

It is not necessary for applicants to have done a mini pupillage at 2TG but we encourage prospective applicants to apply for a mini pupillage to learn more about 2TG and life at the Bar at first hand.

## MINI PUPILLAGE AT 2TG

Mini pupillage is an excellent way to get a feel for life at 2TG. We offer 12 mini pupillages per year in three set weeks. Mini pupillages are 3 days long and during that time we aim to show you a range of barristers' work. You will be asked to undertake an assessed piece of work and a short interview at the conclusion of the mini pupillage. We take successful mini pupillages into account when considering applications for pupillage.

Please note that applicants will only be considered after their first year of a law degree or during the CPE/GDL. The best time to do a mini pupillage is in the year or so prior to applying for pupillage.

We fund expenses (travel, accommodation etc.) of up to £250 for each mini pupillage. We ask that you provide receipts to our Pupillage Administrator either during or after your mini pupillage and we will arrange reimbursement.

Demand for mini pupillages substantially exceeds the number of spaces available. If you are not offered a mini pupillage please do not regard this as a discouragement to apply for a full 12 month pupillage when the time comes.

Your application will be assessed with other applications for the same mini pupillage week. Please complete the application form accessible online and return it to our Pupillage Administrator by email: [pupillage@2tg.co.uk](mailto:pupillage@2tg.co.uk). You should also download the Referee Report Form, pass it to your referee and ask them to send it to the Pupillage Administrator. This can also be done by email.

2TG is a partner in the Inner Temple Pegasus Access Scheme, Bridging the Bar and Bar Placement Scheme. Each scheme supports wider access to working at the Bar through mini pupillages at supporting chambers. For further details please go to [www.pegasus.me](http://www.pegasus.me), [www.bridgingthebar.org](http://www.bridgingthebar.org), [www.barcouncil.org.uk/becoming-a-barrister/school-students/bar-placement-scheme.html](http://www.barcouncil.org.uk/becoming-a-barrister/school-students/bar-placement-scheme.html)

Further information in relation to mini pupillage dates, as well as the mini pupillage application form, can be found at: [www.2tg.co.uk/recruitment/mini-pupillage-2tg](http://www.2tg.co.uk/recruitment/mini-pupillage-2tg).



## GET INVOLVED WITH 2TG

### SOCIAL MEDIA

We're active on LinkedIn and Twitter. You can follow us at:  
[twitter.com/2templegardens](https://twitter.com/2templegardens)

### THE TIMES 2TG MOOT

In collaboration with The Times, we host the annual 2TG/Times Mooting Competition, the largest national mooting competition in the country, with a grand prize of £4,000. The event has been a huge success over the past few years, with the final featuring a panel of Judges from the Court of Appeal and Supreme Court, and a keynote speech from the Lord Chief Justice.

Details on how to sign up for the moot can be found at:  
[www.2tg.co.uk/the-times-2tg-moot](http://www.2tg.co.uk/the-times-2tg-moot)

### 2TG OPEN DAY

Every year 2TG offers students the opportunity to learn more about Chambers at an Open Day. We hope that the day will give those attending a good introduction to 2TG and insight into life at the civil and commercial Bar more generally. The day is aimed at those applying for pupillage in the coming application round and who have not done a mini pupillage at 2TG.

The Open Day involves:

- Presentations from members of Chambers and clerks about practice at 2TG;
- Tips on applying for pupillage;
- Opportunities to ask questions on an informal basis.

Further details can be found at:  
[www.2tg.co.uk/2tg-student-open-day](http://www.2tg.co.uk/2tg-student-open-day)

Please note the Open Day forms no part of the recruitment process.

---

## DIVERSITY & EQUAL OPPORTUNITIES

2TG is committed to equal opportunity in the selection of pupils and tenants and regularly reviews its policies and practices to ensure that this is achieved. The selection process is operated without discrimination, that is to say without regard to race, colour, ethnic or national origin, nationality, citizenship, gender, sexual orientation, age, marital status, disability, political persuasion or belief.

---

---

## THE PUPILLAGE COMMITTEE



**MARIE LOUISE  
KINSLER KC**

"Her expertise in jurisdictional issues is unmatched"

Legal 500



**CLARE BROWN**

"...Excellent at cutting through material to get to the essence of a problem"

Chambers UK



**JACK HARRIS**

"His **technical** expertise is terrific"

Chambers UK



**SAM STEVENS**

"He's a great tactician and confident advocate"

Chambers UK



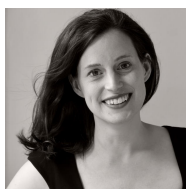
**KATE LEGH**



**NINA UNTHANK**

"...Very experienced ... prepared to take on responsibility for discrete areas of cases"

Legal 500



**ISABEL BARTER**

"An amazing eye for detail and a powerful intellect"

Chambers UK



**PAIGE  
MASON-THOM**

---

## CLERKING TEAM



**LEE  
TYLER**

Senior Clerk  
+44 (0)20 7822 1203  
[lt Tyler@2tg.co.uk](mailto:lt Tyler@2tg.co.uk)



**LEANNE  
TAYLOR**

Deputy Senior Clerk  
& Pupillage  
Administrator  
+44 (0)20 7822 1204  
[ltaylor@2tg.co.uk](mailto:ltaylor@2tg.co.uk)

*"A very slick operation ... approachable and willing to go the extra mile ...  
supremely helpful"*  
(Chambers UK)

---

## FIND US

### Address

2 Temple Gardens  
London EC4Y 9AY

### Telephone

+44 (0)20 7822 1200

### Fax

+44 (0)20 7822 1300

[www.2tg.co.uk](http://www.2tg.co.uk)

[pupillage@2tg.co.uk](mailto:pupillage@2tg.co.uk)

### Tube

Temple (Circle & District)  
Blackfriars (Circle & District and  
Thameslink Rail)

### DX

DX Chancery Lane 134

### Rail

Blackfriars  
City Thameslink